

**klacci**<sup>®</sup>  
life unlocked.



## Door Opening Solutions

Revolutionary Innovation - Intelligent. Secure. Convenient.



ANSI Grade 1

**Door Operator**

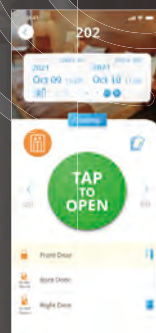


ANSI Grade 1

**Electric Strikes**



**Kii**  
ASSISTANT





# Access Control

## Smart Locks



**The hospitality System**



**The School Security & Safety Solution**



**iF** Series  
ANSI Grade 1  
**Touchless Smart Lock**



**iF+** Series  
ANSI Grade 1  
**Bi-System Touchless Smart Lock**



# Access Control

## Smart Locks





# 1000

Series ANSI Grade 1  
Heavy Duty  
Exit Devices



# 2000

Series ANSI Grade 1  
Heavy Duty  
Narrow Head Exit



# CR

Series ANSI Grade 1  
Door Coordinators



Bar Coordinator



# Exit Devices

Strong and Durable Fire Exit Devices

Devices



**30** Series ANSI Grade 1  
Exit Devices



Gravity Coordinator



Carry Open Bar

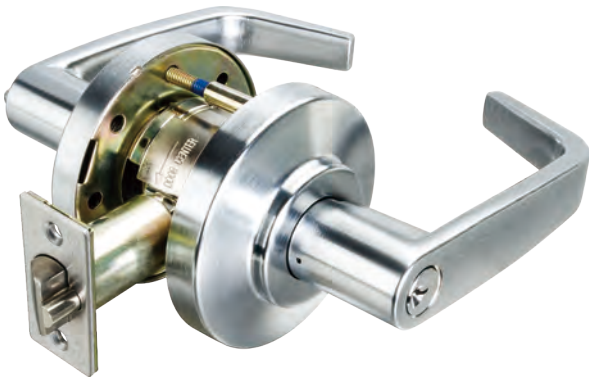
**FB** Series ANSI Grade 1  
Heavy Duty  
Flush Bolts



# Bored Locks

## Cylindrical Locks

**LF** Series  
ANSI Grade 1  
Extra Heavy Duty



**LI** Series  
ANSI Grade 2  
Heavy Duty



**LH** Series  
ANSI Grade 1  
Extra Heavy Duty

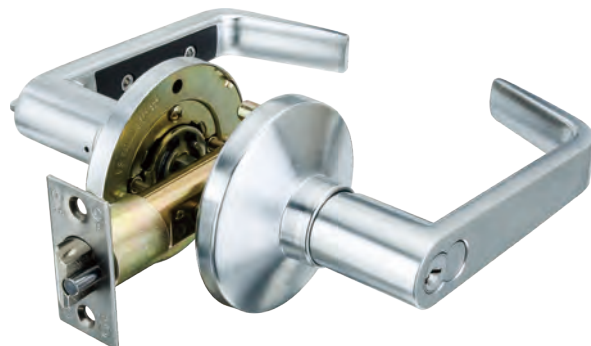


## Tubular Locks

**5K** Series  
ANSI Grade 2  
Heavy Duty



**LE** Series  
ANSI Grade 2  
Heavy Duty



**S** Series  
ANSI Grade 2  
Heavy Duty





Grade 1  
Heavy Duty



**B** Series ANSI Grade 2  
Heavy Duty



## Tubular Deadbolts

**T6** Series ANSI Grade 1  
Extra Heavy Duty



# Mortise Locks

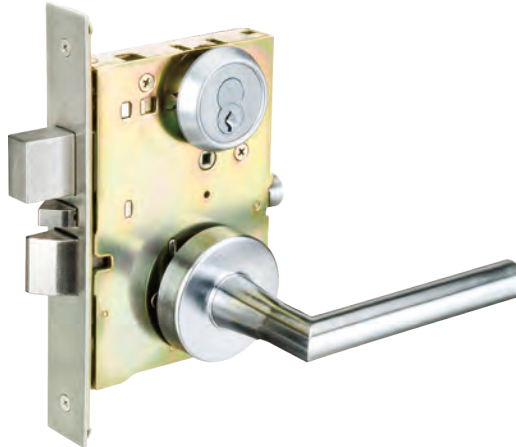
## Mortise Locks

**M** Series ANSI Grade 1  
Extra Heavy Duty



ME Escutcheon Design  
MS Sectional Design available

**M1** Series ANSI Grade 1  
Extra Heavy Duty



MS Sectional Design  
ME Escutcheon Design available

## Mortise Deadlock

**MD** Series ANSI Grade 1  
Extra Heavy Duty



# Specialty Hardware

## Push/Pull Trim

**HL** Series ANSI Grade 2  
Heavy Duty



**HL** Series ANSI Grade 1  
Extra Heavy Duty



For Exit Devices

**HL** Series ANSI Grade 1  
Extra Heavy Duty



For Mortise Locks

## Specialty

**M** Series  
ANSI Grade 1  
Extra Heavy Duty



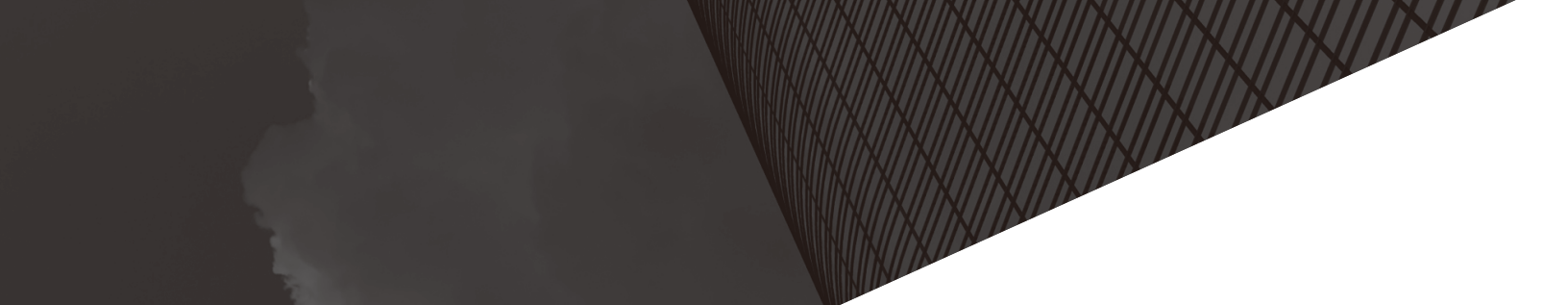
Anti-ligature Solutions





# Project References

Projects	Locations
Commercial Buildings at Raha Beach	Saudi Arabia
Glorietta 1 BPO (Commercial Building)	Makati City, The Philippines
Glorietta 2 BPO (Commercial Building)	Makati City, The Philippines
Starmall BPO Las Pinas (Commercial Building)	Las Pinas City, The Philippines
The Business Center (Commercial Building)	Pasig City, The Philippines
Taylor University Dormitory	Indiana, USA
NCKU, Department of Aeronautics	Tainan, Taiwan
Saudi Electricity Co. (SEC)	Jeddah, Saudi Arabia
Saudi Electricity Co. (SEC)	Dammam, Saudi Arabia
Saudi Electricity Co. (SEC)	Ras-Al Khair, Saudi Arabia
Saudi Electricity Co. (SEC)	Riyadh, Saudi Arabia
Saudi Electricity Co. (SEC)	Khafji, Saudi Arabia
Saudi Electricity Co. (SEC)	Juyamah, Saudi Arabia
Saudi Electricity Co. (SEC)	Uqair, Saudi Arabia
Saudi Electricity Co. (SEC)	Shedgum, Saudi Arabia
Sub-station buildings - Saudi Electricity Co	Saudi Arabia
Power Plants	Saudi Arabia
Texas Department of Transportation	Texas, USA
NASA	USA
Saudi Aramco	Rabigh, Saudi Arabia
Saudi Defense Department	Saudi Arabia
NATIONAL HISTORY MUSEUM	Saudi Arabia
Lab building	Saudi Arabia
Okinawa Military Base	Japan
The 3rd Precinct	Tainan, Taiwan
Kaohsiung Rapid Transit	Kaohsiungm, Taiwan
Hotel/Private/Public Project	USA, Canada, Europe, Australia, The Philippines, Macau, Vietnam, Bangladesh
Ambulatory Clinic Jebel Hafeet (Clinic Center)	Saudi Arabia
Cordoba (Phase 1) (Residential Building)	Saudi Arabia
THE RESIDENCE LAGOS 11 (Residential Building)	Saudi Arabia
Hospital Project	Saudi Arabia
Saudi Entertainment Ventures	Saudi Arabia
Petro Rabigh chemical plant - Rabigh	Saudi Arabia
R&D Building-Dhahran Techno Valley	Saudi Arabia
City of Dream Hotel	Macau
The Venetian Hotel	Macau
LG Science Park	Korea



Projects	Locations
Apple Store	Korea
Holiday Inn Makati	Makati City, The Philippines
Park Inn Hotel Davao	Davao City, The Philippines
Daewoo Amara Hotel	Yangon, Myanmar
Nan Shan Building	Taipei, Taiwan
National Taiwan University Hospital	Taipei, Taiwan
Hotspring Hotel	Taichung, Taiwan
Central Taiwan Science Park Dormitory	Taichung, Taiwan
Southern Taiwan Science Park Project (STSP)	Tainan, Taiwan
Al Quwaieyah Mall, KSA(Shopping Mall)	Saudi Arabia
Starmall Bataan (Shopping Mall)	Bataan, The Philippines
Robinson's General Trias (Shopping Mall)	General Trias, Cavite, The Philippines
Robinson's Ilocos (Shopping Mall)	Ilocos, The Philippines
Robinson's Tacloban (Shopping Mall)	Tacloban City, The Philippines
Glorietta 1 (Shopping Mall)	Makati City, The Philippines
Glorietta 2 (Shopping Mall)	Makati City, The Philippines
Ayala Ceneter Cebu (Shopping Mall)	Cebu City, The Philippines
Fairview Terraces (Shopping Mall)	Fairview, Quezon City, The Philippines



**klacci**<sup>®</sup>  
life unlocked.



[www.klacci.com](http://www.klacci.com)

#### Headquarters and Operation Office

**I-TEK Metal Manufacturing Co., Ltd.**

📍 18 Gungye 3rd Road, Annan, Tainan  
70955, Taiwan.

**T** 886 6 3840722

**F** 886 6 3840715

**E** [sd.klacci@gmail.com](mailto:sd.klacci@gmail.com)

[sd@klacci.com](mailto:sd@klacci.com)

[sd@iteklock.com.tw](mailto:sd@iteklock.com.tw)



#### Global Office

**KLACCI Inc.**

📍 California, USA

📍 Nevada, USA

**T** +1 (720) 675-5677

**E** [sd@klacci.com](mailto:sd@klacci.com)

[sd.klacci@gmail.com](mailto:sd.klacci@gmail.com)